



Astrium GEO-Information Services
TerraSAR-X Services
Data Download via FTPS

1. Access Information

ftps-Server: delivery.infoterra.de
User ID: infoterra
Password: itd

2. Technical Requirements

Some important details relevant for successful download:

1. Please use FileZilla - **Version 2.2.32**
(available for download here: <http://www.astrium-geo.com/en/228-terrasar-x-technical-documents>)
2. The communication is started by the client via port 990. The data is transported over a **dynamically assigned port** between server and client (range 30200-30210). Please be sure to have your firewall or socks proxy servers configured to allow these ports. If you are not sure about the firewall configuration, please ask your local network administrator about this point.

Please note that as per our "General Terms and Conditions for TerraSAR-X Data Supply, the CUSTOMER shall have a **fixed period of 5 days for the download**.

Following this period, the data shall be deemed delivered. We do not send them again.

3. Download via FTPS

For access to the TerraSAR-X Services delivery system, a FTPS capable client which supports FTP over TLS (explicit encryption) is mandatory, e.g.:

- FileZilla Version 2.2.32
- WS FTP Pro
- If using the new Beta-version of WinSCP, please set port to 990. You also need to set "Connection -> Passive mode" in the sub-menu.



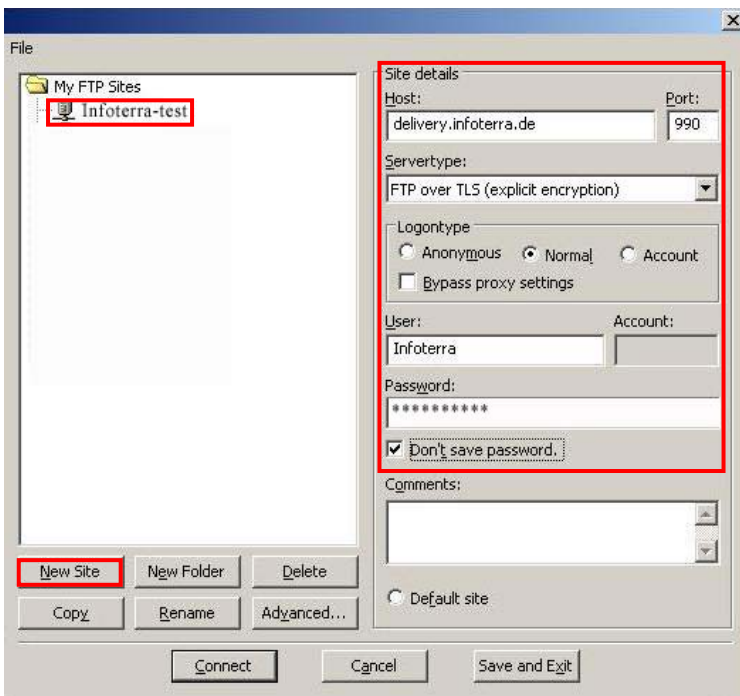
3.1. Using FileZilla

Click on the “Computer” -Symbol on the very left side of the tool bar.



A window called “Servermanager” will open.

Click the “New Site” button and fill in the name of the account (here: Infoterra-test).



Complete the “Site Details” on the right handside of the window:

Host: delivery.infoterra.de

Port: 990

Servertype: FTP over TLS (explicit encryption)

Logontype: normal

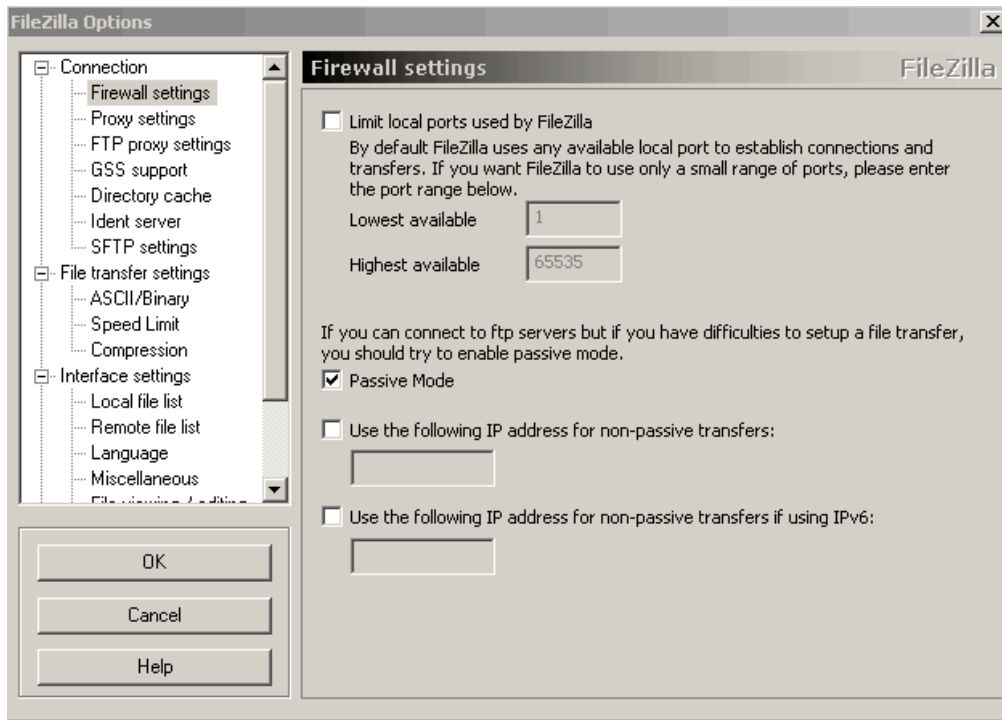
User: - your User ID -

Password: - your Password -

One more important detail is the range of ports.

Please click “Edit” via the Main Menu of FileZilla, then click “Settings” and select “Firewall Settings”.

Please ensure that “Passive Mode” is enabled as shown in the image below.



4. Download via Aspera

Please see separate Aspera Manual “Use of ASPERA Connect to access TerrasSAR-X Services Data”. User ID and Password are the same as above.

Astrium GEO-Information Services

Infoterra GmbH
88039 Friedrichshafen | Germany

contact@astrium-geo.de

www.astrium-geo.de

